



**India Meteorological Department
(Ministry of Earth Sciences)**

BULLETIN NO. 8 (ARB/01/2023)

TIME OF ISSUE: 0900 HOURS IST

DATED: 07.06.2023

FROM: INDIA METEOROLOGICAL DEPARTMENT (FAX NO. 24643965/24699216/24623220)

**TO: CONTROL ROOM, NDM, MINISTRY OF HOME AFFAIRS (FAX.NO. 23093750)
CONTROL ROOM NDMA (FAX.NO. 26701729)**

CABINET SECRETARIAT (FAX.NO.23012284, 23018638)

PS TO HON'BLE MINISTER FOR S & T AND EARTH SCIENCES (FAX NO.23316745)

SECRETARY, MOES (FAX NO. 24629777)

H.Q. (INTEGRATED DEFENCE STAFF AND CDS) (FAX NO. 23005137/23005147)

DIRECTOR GENERAL, DOORDARSHAN (23385843)

DIRECTOR GENERAL, AIR (23421105, 23421219)

PIB MOES (FAX NO. 23389042)

UNI (FAX NO. 23355841)

D.G. NATIONAL DISASTER RESPONSE FORCE (NDRF) (FAX NO. 26105912, 2436 3260)

DIRECTOR, PUNCTUALITY, INDIAN RAILWAYS (FAX NO. 23388503)

CHIEF SECRETARY, KERALA (FAX NO. 0471-2327176)

ADMINISTRATOR, LAKSHADWEEP ISLANDS (FAX NO. 0413-262184)

CHIEF SECRETARY, TAMILNADU (FAX NO. 044-25672304)

CHIEF SECRETARY, GOA (FAX NO. 0832-2415201)

CHIEF SECRETARY, KARNATAKA (FAX NO. 080-22258913)

CHIEF SECRETARY, MAHARASHTRA (FAX NO. 022- 22028594)

CHIEF SECRETARY, GUJARAT (FAX NO. 079-23250305)

CHIEF SECRETARY, DAMAN & DIU (FAX NO. 0260-2230775)

CHIEF SECRETARY, DADRA & NAGAR HAVELI (FAX NO. 0260-2645466)

Sub: Cyclonic Storm “Biparjoy” (pronounced as “Biporjoy”) intensified into a Severe Cyclonic Storm over eastcentral and adjoining southeast Arabian Sea

The cyclonic storm “Biparjoy” (pronounced as “Biporjoy”) over eastcentral and adjoining southeast Arabian Sea moved nearly northwards with a speed of 2 kmph during last 6 hours, intensified into a severe cyclonic storm and lay centered at 0530 hours IST of 07th June, 2023 over the same region near latitude 12.6°N and longitude 66.1 °E, about 890 km west-southwest of Goa, 1000 km southwest of Mumbai, 1070 km south-southwest of Porbandar and 1370 km south of Karachi.

It is likely to move nearly northwards during next 24 hours and intensify into a very severe cyclonic storm. It would then move north-northwestwards during subsequent 3 days.

Forecast track and intensity are given below:

| Date/Time(IST) | Position (Lat. °N/ long. °E) | Maximum sustained surface wind speed (Kmph) | Category of cyclonic disturbance |
|----------------|---------------------------------|--|-------------------------------------|
| 07.06.23/0530 | 12.6/66.1 | 95-105 gusting to 115 | Severe Cyclonic Storm |
| 07.06.23/1130 | 12.8/66.2 | 105-115 gusting to 125 | Severe Cyclonic Storm |
| 07.06.23/1730 | 13.0/66.3 | 115-125 gusting to 140 | Very Severe Cyclonic Storm |
| 07.06.23/2330 | 13.3/66.3 | 125-135 gusting to 150 | Very Severe Cyclonic Storm |
| 08.06.23/0530 | 13.9/66.2 | 130-140 gusting to 155 | Very Severe Cyclonic Storm |
| 08.06.23/1730 | 14.5/66.0 | 135-145 gusting to 160 | Very Severe Cyclonic Storm |
| 09.06.23/0530 | 15.1/65.8 | 135-145 gusting to 160 | Very Severe Cyclonic Storm |
| 09.06.23/1730 | 15.8/65.5 | 145-155 gusting to 170 | Very Severe Cyclonic Storm |
| 10.06.23/0530 | 16.5/65.2 | 145-155 gusting to 170 | Very Severe Cyclonic Storm |
| 10.06.23/1730 | 17.4/64.8 | 145-155 gusting to 170 | Very Severe Cyclonic Storm |
| 11.06.23/0530 | 18.3/64.4 | 135-145 gusting to 160 | Very Severe Cyclonic Storm |
| 11.06.23/1730 | 19.2/64.0 | 130-140 gusting to 155 | Very Severe Cyclonic Storm |
| 12.06.23/0530 | 19.8/63.7 | 125-135 gusting to 150 | Very Severe Cyclonic Storm |

(i) Wind warning:

7th June: Gale wind speed reaching 95-105 kmph gusting to 115 kmph is prevailing over eastcentral Arabian Sea and adjoining areas of westcentral & southeast Arabian Sea. It is likely to increase and become 125-135 kmph gusting to 155 kmph during night of 7th June over the same area.

Squally wind speed reaching 40-50 kmph gusting to 60 kmph is likely over adjoining areas of westcentral & south Arabian Sea and along & off north Kerala-Karnataka-Goa coasts.

8th June: Gale wind speed reaching 130-140 kmph gusting to 155 kmph is likely to prevail over eastcentral Arabian Sea and adjoining areas of westcentral & south Arabian and it is likely to increase and become 135-145 kmph gusting to 160 kmph from evening of 8th June over the same area.

Squally wind speed reaching 40-50 kmph gusting to 60 kmph is likely along & off Karnataka-Goa-Maharashtra coasts.

9th June: Gale wind speed reaching 135-145 kmph gusting to 160 kmph is likely to prevail over central Arabian Sea and it is likely to increase and become 145-155 kmph gusting to 170 kmph from evening of 9th June over the same area. Squally wind speed reaching 50-60 kmph gusting to 70 kmph is likely over adjoining areas of South Arabian Sea.

Squally wind speed reaching 40-50 kmph gusting to 60 kmph is likely along & off Karnataka-Goa- Maharashtra coasts.

10th June: Gale wind speed reaching 145-155 kmph gusting to 170 kmph is likely to prevail over central Arabian Sea.

Squally wind speed reaching 40-50 kmph gusting to 60 kmph is likely over adjoining areas of south Arabian Sea and along & off north Karnataka-Goa-Maharashtra coasts.

11th June: Gale wind speed reaching 135-145 kmph gusting to 160 kmph is likely to prevail over central & adjoining north Arabian Sea.

Squally wind speed reaching 40-50 kmph gusting to 60 kmph is likely over adjoining areas of eastcentral Arabian Sea and along & off Goa-Maharashtra coasts, northeast Arabian Sea and along & off Gujarat coasts.

(iii) Sea condition

7th June: Very high Sea condition is likely to prevail over eastcentral Arabian Sea and adjoining westcentral & southeast Arabian. Sea condition is likely to be rough to very rough over south Arabian Sea, along & off north Kerala-Karnataka-Goa coasts, Lakshadweep-Maldives areas.

8th June:

Sea condition is likely to be very high to phenomenal over central Arabian Sea and adjoining south Arabian and it is likely to become phenomenal from evening of 8th June over the same region.

Sea condition is likely to be rough to very rough over south Arabian Sea, along & off Karnataka-Goa-Maharashtra coasts.

9th June: Sea condition is likely to be phenomenal over central Arabian Sea. Sea condition is likely to be rough to very rough over adjoining areas of South Arabian Sea and along & off Karnataka-Goa- Maharashtra coasts.

10th June: Sea condition is likely to be phenomenal over central Arabian Sea. Sea condition is likely to be rough to very rough over adjoining areas of north & South Arabian Sea and along & off Karnataka-Goa- Maharashtra coasts.

11th June: Sea condition is likely to be phenomenal to very high over central & adjoining north Arabian Sea. Sea condition is likely to be rough to very rough over adjoining areas of eastcentral Arabian Sea and along & off Goa-Maharashtra coasts, northeast Arabian Sea and along & off Gujarat coasts.

(iv) Fishermen Warning

Fishermen are advised not to venture into:

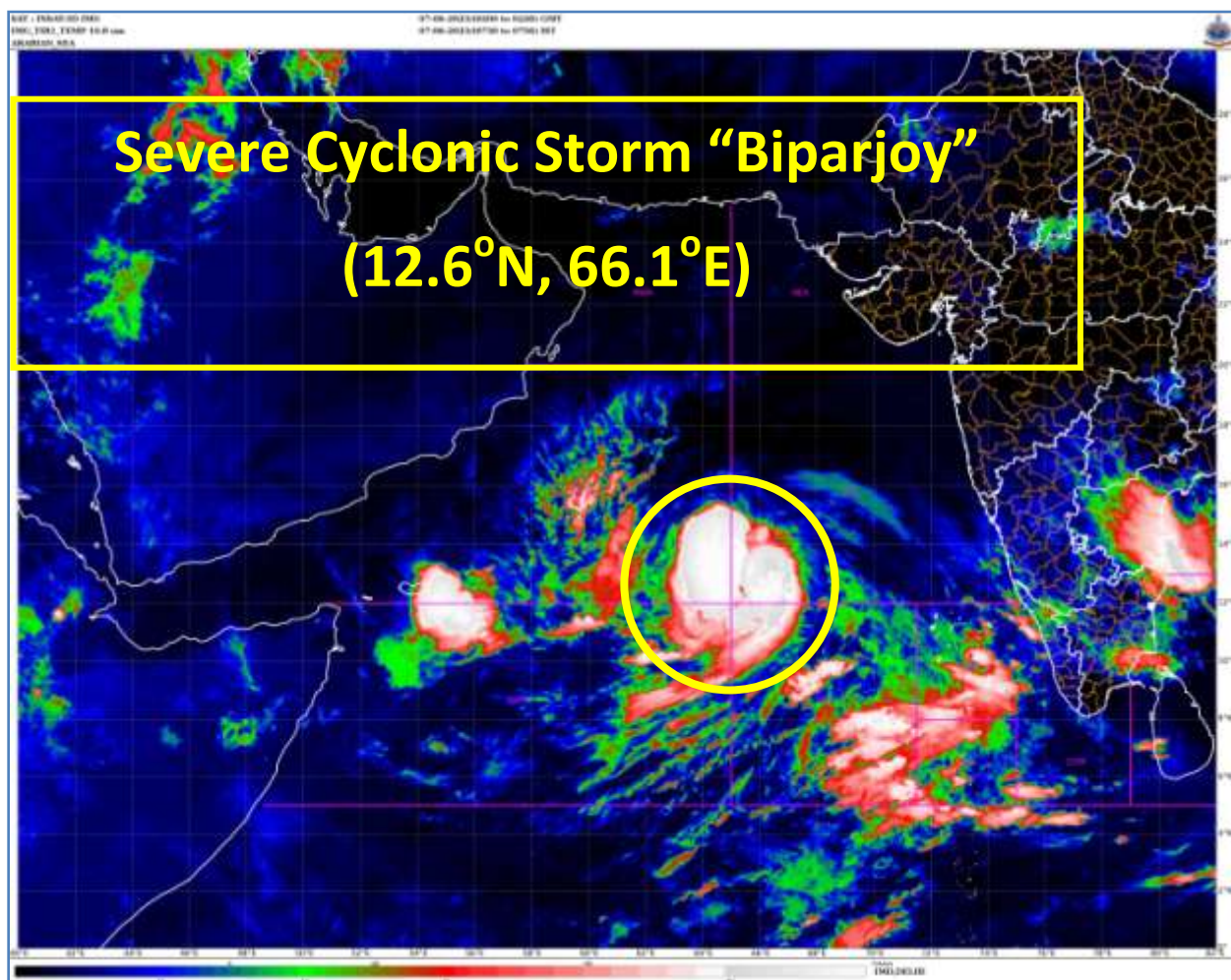
- (i) Central Arabian Sea till 12th June.
- (ii) North Arabian Sea on 12th June.
- (iii) Adjoining areas south Arabian Sea till 8th June.
- (iv) Along & off along & off Kerala-Karnataka coasts, Lakshadweep-Maldives areas during 6th and 7th, along & off Konkan-Goa- Maharashtra coasts during 8th-12th and along & off Gujarat coast on 11th & 12th June.
- (v) Those out at sea are advised to return to coast.

The system is under continuous surveillance and the next message will be issued at 1130 hours IST of today, the 7th June, 2023.

(Shobhit Katiyar)
Scientist C, Cyclone Warning Division, New Delhi

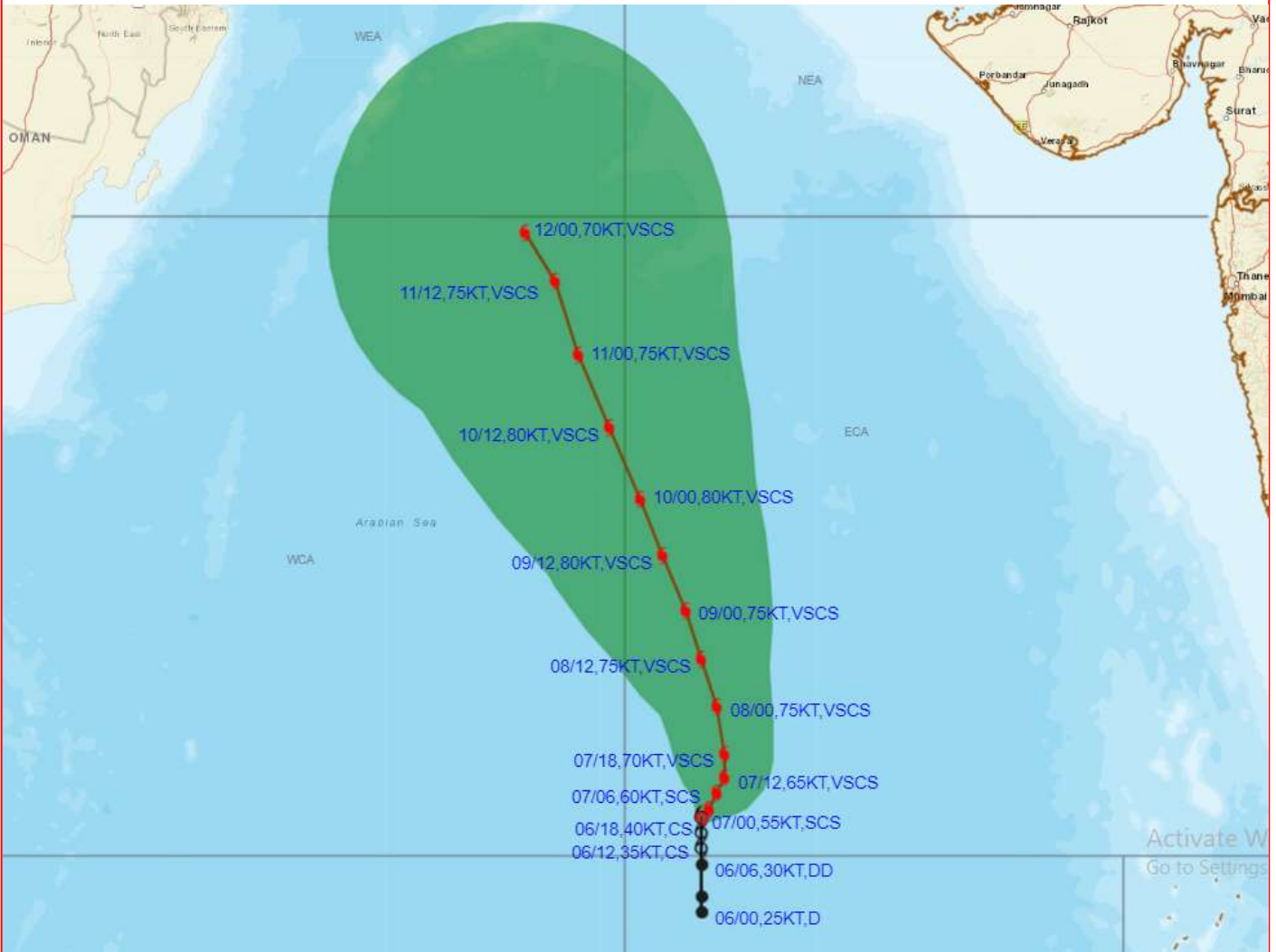
Copy to: ACWC Kolkata/ ACWC Chennai/ CWC Bhubaneswar/CWCVisakhapatnam/CWC Ahmedabad/ MO Port Blair/MC Raipur/MC Bhopal/MC Hyderabad/RMC Nagpur

LEGEND: Heavy Rainfall: 64.5 to 115.5mm, **Very Heavy Rainfall:** 115.6 to 204.4mm **Most Places:** more than 76% of total stations, **Isolated Places:** Less than 25% of total





OBSERVED AND FORECAST TRACK ALONGWITH CONE OF UNCERTAINTY OF SEVERE CYCLONIC STORM "BIPARJOY" OVER EASTCENTRAL AND ADJOINING SOUTHEAST ARABIAN SEA BASED ON 0000 UTC (0530 IST) OF 07TH JUNE 2023.

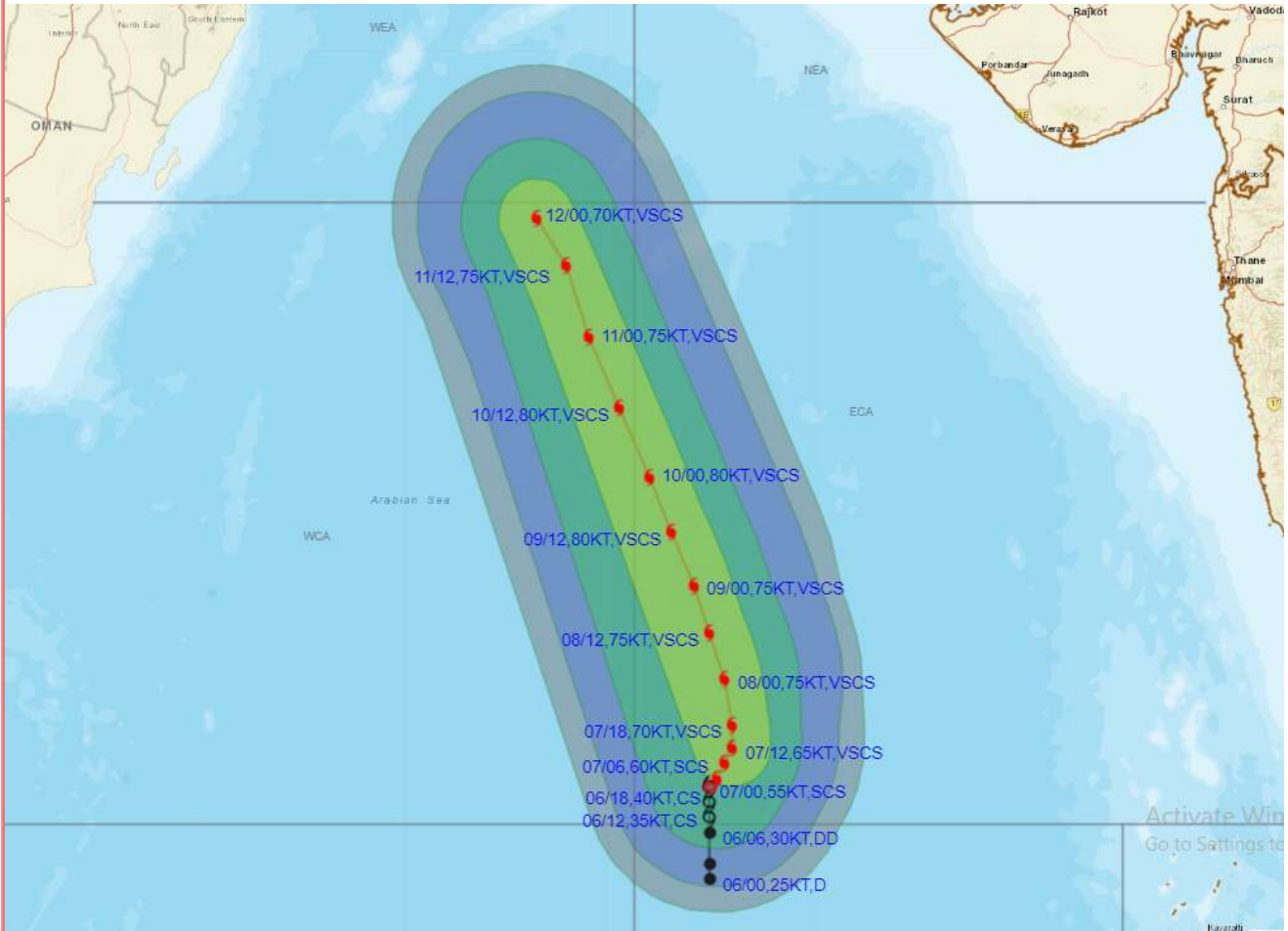


DATE/TIME IN UTC
 IST=UTC + 0530
 L: LOW PRESSURE AREA
 WML: WELL MARKED LOW PRESSURE AREA
 D: DEPRESSION (17-27 KT)
 DD: DEEP DEPRESSION (28-33 KT)
 CS: CYCLONIC STORM (34-47 KT)
 SCS: SEVERE CYCLONIC STORM (48-63KT)
 VSCS: VERY SEVERE CYCLONIC STORM (64-89 KT)
 ESCS: EXTREMELY SEVERE CYCLONIC STORM (90-119 KT)
 SuCS: SUPER CYCLONIC STORM (\geq 120 KT)

- LESS THAN 34 KT
- 34-47 KT
- \geq 48 KT
- OBSERVED TRACK
- FORECAST TRACK
- CONE OF UNCERTAINTY



OBSERVED AND FORECAST TRACK ALONGWITH QUADRANT WIND DISTRIBUTION OF SEVERE CYCLONIC STORM "BIPARJOY" OVER EASTCENTRAL AND ADJOINING SOUTHEAST ARABIAN SEA BASED ON 0000 UTC (0530 IST) OF 07TH JUNE 2023.



DATE/TIME IN UTC

IST=UTC + 0530

L: LOW PRESSURE AREA

WML: WELL MARKED LOW PRESSURE AREA

D: DEPRESSION (17-27 KT)

DD: DEEP DEPRESSION (28-33 KT)

CS: CYCLONIC STORM (34-47 KT)

SCS: SEVERE CYCLONIC STORM (48-63KT)

VSCS: VERY SEVERE CYCLONIC STORM (64-89 KT)

ESCS: EXTREMELY SEVERE CYCLONIC STORM (90-119 KT)

SuCS: SUPER CYCLONIC STORM (\geq 120 KT)

● LESS THAN 34 KT

○ 34-47 KT

● \geq 48 KT

— OBSERVED TRACK

— FORECAST TRACK

▲ CONE OF UNCERTAINTY

AREA OF MAXIMUM SUSTAINED WIND SPEED:

■ 28-33 KT (52-61 KMPH)

■ 34-49 KT (62-91 KMPH)

■ 50-63 KT (92-117 KMPH)

■ \geq 64 KT (\geq 118 KMPH)

IMPACT OVER THE SEA

| MSW (knot/kmph) | Impact | Action |
|-------------------------|------------------------|--|
| 28-33 (52-61) | Very rough seas | Total suspension of fishing operations |
| 34-49 (62-91) | High to very high seas | Total suspension of fishing operations |
| 50-63 (92-117) | Very high seas | Total suspension of fishing operations |
| \geq 64 (\geq 118) | Phenomenal | Total suspension of fishing operations |